

EXPLORE HISTORIC HERBERTON

——
ATHERTON TABLELANDS

EST. 1880



EXPLORE THE OLDEST TOWN ON THE ATHERTON TABLELANDS

HISTORIC VILLAGE HERBERTON

From rare 100-year old John Deere tractors to fashion, pharmaceuticals, antique cars, coaches and much-loved toys – experience Australia as it was in the late 1800s at the Historic Village Herberton, an immaculate outdoor pioneer museum on the Atherton Tablelands in Queensland's Far North.

Voted by TripAdvisor users as one of the Top 10 museums in the country, the Historic Village lets you walk down the main street of an 1880s town, exploring Australia's fascinating and exciting past with every step. More than 60 heritage buildings have been lovingly restored, refurbished or rebuilt to make the Historic Village a wonderful day out.

Hear and feel as well as see the past through the working displays, including the Village blacksmith, newspaper printer and working sawmill. There are 16 acres of village to explore and self-guided tours are available in five languages.

A highlight of your visit will be Elderslie House, the 130-year old homestead of Herberton's founder John Newell. Its elegant architecture, spacious verandahs and collection of antiques is truly special. A nature trail and stunning gardens are also perfect spaces to explore and enjoy at this treasured historical village.

OPENING HOURS

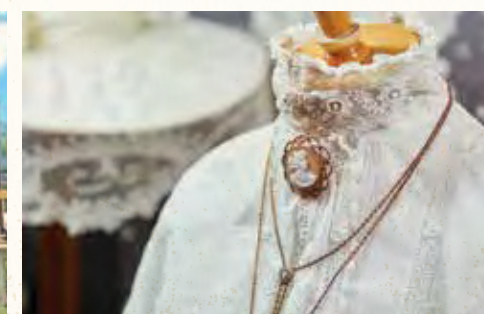
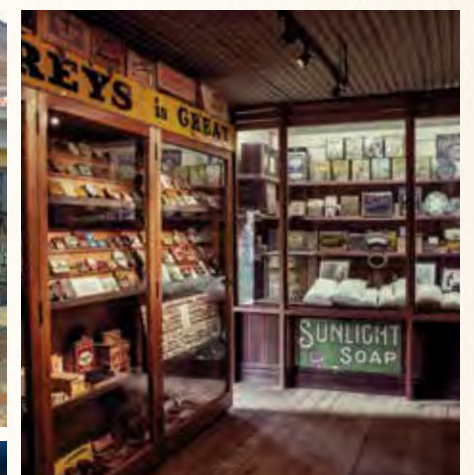
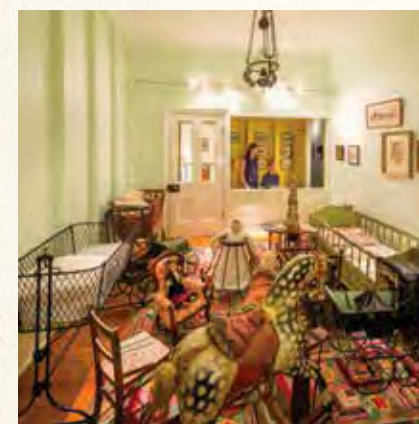
HIGH SEASON 9am–5pm, last entry 3.30pm
Late March to October 7 • December 26 to January 20

LOW SEASON 9.30am–4pm, last entry 2.30pm
January 21 to Late March • October 8 to December 24

Adults: \$31 Children: \$15
Concession: \$28 Family (2x2): \$78

GUIDED TOURS AVAILABLE

For more information on guided tours of the Atherton Tablelands, including the Historic Village Herberton, visit www.historicvillageherberton.com.au



Don't forget
your camera



Spot the birds
and platypus



Dogs on leads
welcome

HERBERTON TOWNSHIP



Visit the heritage heart of Herberton and the oldest town on the Atherton Tablelands, established in 1880 to exploit the tin found on the hills surrounding The Wild River. Grace Street, the main street of Herberton, features historical pubs, shops and cafes and visitors enjoy the old world charm of this heritage town that has changed very little in 130 years.

THINGS TO DO AROUND HERBERTON

BIRDWATCHING

More than 327 species of birds can be found on the Atherton Tablelands, drawn by a variety of food, habitat and climate. Some are resident while others are migratory.

THE RAILWAY MUSEUM

Located at the end of John Street, The Railway Museum is open on weekends and public holidays. The museum The Atherton-Herberton Historic Railway Inc. volunteer organisation operates train rides from Herberton Station to the Historic Village Herberton on a regular Sunday timetable between 10am and 3pm.

THE HERBERTON MINING MUSEUM

Occupying the site of the first big tin discovery at the Great Northern Mine, the museum has themed areas telling the fascinating story of Herberton's mining history and the town's development.

GREAT NORTHERN MINE WALK

The one kilometre Great Northern Mine walk starts at the Herberton Mining Museum and Visitor Information Centre carpark situated in Jacks Road, Herberton.

PADRE WHITE REFLECTION PARK

The Padre White Memorial Chapel is dedicated to all Australians who served in conflicts. Located in Reflection Park, its design is based on a WWI field tent.

HERBERTON SPY & CAMERA MUSEUM

To the unknowing eye, the Herberton Spy & Camera Museum's ageing 130-year old exterior could easily lead a visitor to walk on by and write it off as a novelty. However, a quick peek through the front door reveals walls lined with cameras and old curiosities.

IRVINEBANK

Established in 1882, Irvinebank boasts many century-old buildings. These include Loudoun House, now a museum, which was the home of the town's founder, John Moffat. At nearby Montalbion, a former Cobb & Co. stop, you can fish in the dam and camp under the stars.

THE RISLEY SCULPTURE

Commissioned in 1980 by the then Eacham Shire Council, the Risley Sculpture was shaped to represent the interlocking hills of the Atherton Tablelands. It was returned to Herberton, the home of the artist Tom Risley, some years later, where it was restored under his watch.

DRIVE QUEENSLAND'S HIGHEST DECLARED ROAD

Start from Grace Street, Herberton and drive south for 15km. Turn right onto the Kennedy Highway and drive approx 2km to the Tumoulin Road turn off, turn right and drive approx 800m to the highest road at 1162m.

Herberton is also a great starting point for many 4WD trails and mountain biking.

EVENTS TO WATCH OUT FOR



PIONEER WEEKEND

Old fashioned fun and wonder is the focus of the Historic Village Herberton's Pioneer Weekend on the first weekend of May (QLD Labour Day Long Weekend). Families of all ages are invited to join in at the replica mining town and have a go at 'olden day' activities, try their skills at sack races and the egg and spoon challenge, or strut their stuff in period costume for Fashions on the Field.

HERBERTON FLOWER SHOW

One of the best places to see the splendour of the new spring season is Herberton. Held every year on the first weekend in September, the Herberton Flower Show has been run by the Herberton Garden Group for 71 years and they certainly know how to display botanics at their colourful best.



JACARANDA FESTIVAL

Held annually in October, the Jacaranda Festival celebrates the purple bloom. This fantastic community event is organised and hosted by Atherton-Herberton Historic Railway Inc. Enjoy train rides on the Jacaranda Express, delicious scones with a purple Jacaranda cream or take in the market stalls – you may just buy a jacaranda or two to take home.

HERBERTON CHRISTMAS MARKET

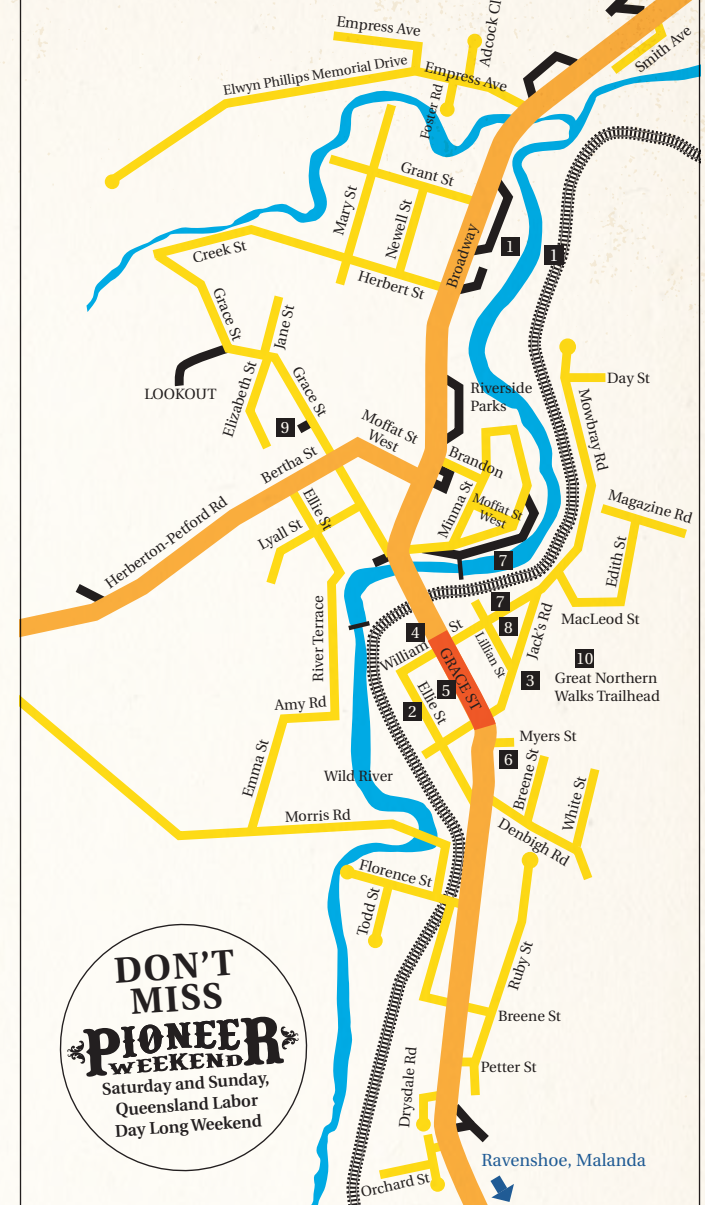
The Herberton Twilight Christmas Market is a favourite on the calendar. Held just before Christmas, revellers can enjoy olden day arts and crafts, vintage fare, cakes and season treats and artisan pottery and collectibles.



NEW YEAR'S EVE STREET PARTY

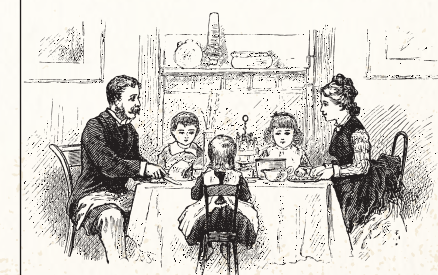
Kick off your shoes and dance in the New Year at this annual event. Typically held from 6.30pm to 12.30am in Grace Street, there is plenty to keep the crowds entertained with live music, local food and children's activities.

HERBERTON TOWN CENTRE



- | | |
|------------------------------|-----------------------------|
| 1 Historic Village Herberton | 6 ANZAC Memorial Park |
| 2 Herberton Historic Railway | 7 Park with BBQ Facilities |
| 3 Herberton Mining Museum | 8 Police Station |
| 4 Spy & Camera Museum | 9 Hospital |
| 5 School of Arts Building | 10 Great Northern Mine Walk |

WHERE TO EAT



The Royal Hotel
Tin Town Sweets
Gallery Cafe
Jacaranda Cafe
Bakerville Tearooms
*entry fee applies to the
Historic Village Herberton
Pelican's Pick Cafe
Herberton
Convenience Store



HOW TO GET TO HERBERTON

FROM SOUTH/TOWNSVILLE

Turn onto the Palmerston Highway at Innisfail and drive to Millaa Millaa (Highway 25). Take a left turn onto East Evelyn Rd (24) and then a right onto Kennedy Highway (1). Turn left onto Longlands Gap Rd (52), which will take you to Herberton. Herberton is 97km from Innisfail and will take 1hr 19mins.

FROM SOUTH/GORDONVALE

Take the Gillies Range Rd (52) from Gordonvale to Atherton and carry on Highway 52 through Atherton (Louise St) to National Highway 1; turn right and then left again to reconnect with 52. Or turn off at Marks Lane before Atherton to connect with 25, then Hastie Rd to connect with 52 into Herberton. Herberton is 77km from Gordonvale or 1h 18mins.

FROM CAIRNS

Head up the Kuranda range (Kennedy Highway/1) to Mareeba, continue on Highway 1 to Atherton before taking Highway 52 (Atherton-Herberton Rd) to Herberton. Herberton is 97km from Cairns or 1h 37mins.

FROM PORT DOUGLAS

Head north on the Captain Cook Highway (44) to where 44 becomes the Mossman Mount Molloy Rd. Take it to junction with Mulligan Highway (81) just before Mount Molloy and travel on 81 through to Mareeba. Highways 1 and 52 will then get you to Herberton. Herberton is 138km or 1h 53mins from Port Douglas.

FROM THE GULF TRAVELLING THE SAVANNAH WAY

Jump off the Savannah Way at either Atherton or Ravenshoe and take Highway 52 for a detour to Herberton.



PUBLIC RV SANITARY DUMP POINTS

Atherton	Grove Street
Chillagoe	Queen Street
Mareeba	Doyle Street
Ravenshoe	26 Ascham Street
Yungaburra	Mulgrave Road



The Historic Village offers Electric Vehicle Charging

WHERE TO STAY ON THE ATHERTON TABLELANDS

HERBERTON

Wild River Caravan Park is within cooe of the Historic Village Herberton off Holdcroft Drive on the Atherton Herberton Rd. It is spacious and clean, and has 15 powered sites as well as camping sites and several cabins. It's a small, family run park and pets are allowed under supervision. Bookings are essential. Ph: 07 4096 2121.

ATHERTON

Big 4 NRMA Atherton Holiday Park is a 15-minute drive from the Historic Village Herberton and has a range of powered and unpowered sites plus cabins, cottages and family villas. It's eco certified, has a pool and is sited in six acres of gardens and backs on to lush rainforest. There are the usual amenities plus a poolside Balinese cabana, adventure playground, mountain bike washdown and lots of opportunities for birdwatching – ask at reception for the park bird list. It's at 141 Herberton Road.

WALKAMIN

Rocky Creek War Memorial Campground is half an hour from the Historic Village Herberton and has 50 sites. Permits are required to stay here, with bookings via Tablelands Regional Council. It's big, so space won't be a problem. There is a 72 hour rest area adjacent to the War Memorial Park for fully self-contained vehicles with a donation box supporting the War Memorial. The toilets are closed 6pm–8am. It's just off the Kennedy Highway. This is best for RVs and caravans in dry weather.

RAVENSHOE

The Ravenshoe Railway Caravan Park is as its name suggests, near the steam railway depot. There are 50 powered and unpowered sites at the 63 Grigg Street location. It's close to town, is pet friendly and has a dump point. It's half an hour from the Historic Village Herberton.

YUNGABURRA

Like the look of Yungaburra when visiting the Historic Village Herberton? Try the Lakeside Motor Inn and Caravan Park at 2 Tinaburra Drive at Lake Tinaroo. It has powered and unpowered sites, a pool and is about five minutes from town and 25 minutes from the Historic Village Herberton.

WHEN TO VISIT

The best time to visit the Atherton Tablelands is – anytime. The region is blessed with a temperate climate making it comfortable all year round.

Autumn (March to May)

As the summer rains clear, everywhere is green. The morning skies become clearer and stunning colourful sunsets are frequent.

Winter (June to August)

In winter, the clear blue skies creates crisp evenings including some southern areas receiving early morning frosts. Experience the ambience of a wood fire and perfect night skies for star gazing.

Spring (September to November)

Afternoon storms can come through from November lighting up the night sky as they pass through to the coast.

Summer (December to February)

Rainfall usually falls in the summer months between December to March and can extend through to April. These cooling tropical rains are the life force of the region, revitalising the plants and animals, following the winter months.





6 Broadway, Herberton, Queensland 4887 Ph: 07 4096 2002



WWW.HISTORICVILLAGEHERBERTON.COM.AU